



Arts Auto Electric

est. 1960

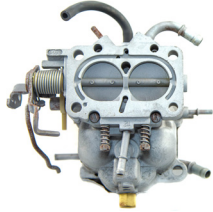
Art's Auto Electric supplies and services OEM, vintage, rebuilt, & remanufactured rotating electrical assemblies - starters, alternators and motors for industrial, commercial, agricultural applications.

WE HAVE THOUSANDS OF PARTS FOR YOUR APPLICATION. INQUIRE TODAY AT 519-664-2102

NIKKO DENSO  **HITACHI**



Blower Motors



Carburetor Cores



Slip Ring Ends Drive Ends



Starters



Alternators

ALTERNATOR SLIP-RING END PLATES & BACK END PLATES

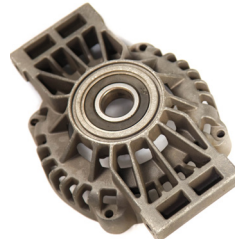


Delco 21SI Series IR/EF Drive End

Alternator Drive End Housing WAI: 21-129

APPLICATIONS

Agco Allis, Agco Gleaner, Agco Star, Agco White, Atlas Copco, Bluebird, Buhler Genesis, Buhler Versatile, Case, Caterpillar Ag. & Ind., Champion, Chevrolet, Consolidated Diesel, Cummins Engines, Ford, Freightliner, GMC, International, John Deere, Kenworth, Mack, Massey Ferguson, Miller Applications Technology, New Holland, Peterbilt, Prairie, Samsung, Timberjack, Vermeer, Volvo, Western Star HD



Delco 24SI HP Series IR/IF Drive End

Alternator Drive End Housing WAI: 21-192

APPLICATIONS

Freightliner, International, Kenworth, Peterbilt, Sterling, Volvo heavy duty and medium heavy trucks.

MODELS

FL, MR, RB, RD, CH, CV, CX, CL, CT, DM, FDM, L-Line T300, T600, T800, VHD, VNM

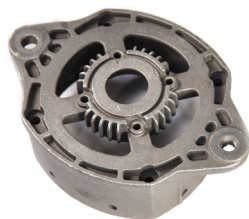


Ford 3G Series 95A IR/IF Drive End

Alternator Drive End Housing WAI: 21-213

APPLICATIONS

Ford 1991-2005, Mazda 1991-2007, Mercury 1997-1998



Delco 33SI, 34SI Series IR/EF Drive End

Alternator Drive End Housing WAI: 21-168

APPLICATIONS

Caterpillar Ag. & Ind. 1980-2006, Ford 1995-1999, Freightliner 1993-2008, International 1996-2007, Kenworth 1995-2008, Mack 1995-2008, Massey Ferguson 1985-1986, New Holland 1994-2007, Peterbilt 1996-2006, Steiger 1982-1986, Sterling Truck 1999-2008, Volvo 1994-2007, Western Star HD 1996-2007, White Industrial 1983-1986

MODELS

L-6000 to L-9000, Argosy, Classic, Columbia, Condor, FL, FLC, T600, T800, 3xx, VHD, VNL, VNM, W900



Delco Remy Slip Ring End

Alternator Slip Ring End Housing WAI: 22-108

APPLICATIONS

Chevrolet, GMC for medium duty, medium/heavy truck
Replaces: Delco Europe DRA3054, Denso 100210-2620, 100210-2730, 121000-0720, 121000-0890, Toyota 27020-64050, 27030-64040, 27030-64070

MODELS

C5, C6, C7, C8, P4, P6, S7, Topkick



Delco 15SI/Type 116 Series IR/EF Slip Ring End

Alternator Slip Ring End Housing WAI: 22-105

APPLICATIONS

Agco Allis 1991-1996, Agco Gleaner 1986-2002, Agco Spru Coupe 1998-2003, Agco White 1993-1999, Allis Chalmers 1978-1986, Case 1978-1993, Cummins Engines 1980-1993, Detroit Diesel 1988-1988, Deutz-Allis 1986-1993, Elgin Sweeper 1979-1995, Ford 1986-1998, Grimmer Schmidt 1997-2003, International 1978-1986, John Deere 1987-2007, Macdon 1995-2000, Massey Ferguson 1995-1998, New Holland 1990-1997, Steiger 1986-1992, Timberjack 1981-2007, Versatile 1986-1993, White Industrial 1988-1992

MODELS

F2, F3, Falcon, K2, L series, M3, N5, N6, N7, Pelican, Puma 9110, R4x, R5x, R6x, R7x, Wildcat, 2xxx, 3xxx, 4xxx, 5xxx, 6xxx, 7xxx, 8xxxx, 9xxx, B series, C series, Eagle